

An Introduction

Sister company  SeasureShipbroking



Value



Search



Map



Trade

Whether you need confidential and daily values, a comprehensive database or vessel tracking, position list and trade information, VesselsValue is the partner you can count on.

Who?

In 1993 Richard Rivlin founded specialist S&P broker, Seasure Shipbroking. In 2008 he laid down the foundations of what was to become VesselsValue with development starting in 2009 and VV going live May 2011. We now have 7 offices globally; London, Singapore, Korea, China, The Philippines, Isle of Wight and Stoke and are rapidly expanding. We are used by companies worldwide, clients include leading banks, funds, shipowners, advisors, government regulators and more.

What?

OUR DATABASE

Knowing everything about a vessel is crucial to valuing it accurately, which is why we invest in our own research team and extensive database.

- Dedicated research office (Isle of Wight)
- Comprehensive database of the global commercial fleet, sales and market indices
- Updated and validated on a daily basis

OUR METHODOLOGY

The methodology we've developed incorporates ship specifications, real time sales and freight earning sentiment, which enables market valuations of vessels in even the most illiquid of markets.

Our Services



Value

Value specific ships, entire fleets and companies in seconds for accurate, unbiased and instant online valuations.



Search

Search the VV database for vessels or transactions by a huge range of commercial and technical specifications.



Map

Our advanced vessel mapping and AIS tracking service. Analyse real time and historical vessel movements.



Trade

Access ton mile demand and vessel trading information. Includes a vessel specific trade tool, macro ton mile demand summary and position list information.

Our email API tool, **VV Appy**, sends vessel values, specs and company information straight to your inbox. All you need to do is email Appy with your request.



VesselsValue
Appy

Why VV?

- 100% confidential
- Proven and tested accuracy
- Accessible 24 hours a day, 365 days a year
- Easy to use platform
- Excellent customer service

We currently cover

Bulkers	Tankers	Containers	LNG and LPG	Small Tankers	Small Dry	Offshore	Reefers	Superyachts
> 20,000 DWT	> 29,500 DWT	> 500 TEU	> 100 CBM	< 29,500 DWT	< 40,000 DWT	OSV,OCV & MODU	> 5,000 DWT	> 24m LOA



Value

Daily updated current and historical values for vessels, company fleets and portfolios. View and compare across six different asset values: Market, DCF, Demolition, Forecast, Linear and Replacement.

MARKET

What a vessel can be bought or sold for in the market.

DCF

The estimated long term value of a vessel calculated as the discounted cash flow of its projected revenues and costs.

DEMOLITION

What a vessel can be sold for in the scrap market. Shown for Indian subcontinent and Chinese scrap yards.

FORECAST

Predictions of the future market values of a vessel until the end of its economic life.

LINEAR

The accountant's value and what often appears on the balance sheet of a ship owning company.

REPLACEMENT

The cost to replace a vessel with a newbuild ship of equivalent specifications.

Other Value services include:

MARKET AND DCF VALUATION CERTIFICATES
Available to download at any time.

FIXED AGE ANALYSIS
An interactive tool that allows analysis of the historical distribution of market values for different generic vessel types and ages.

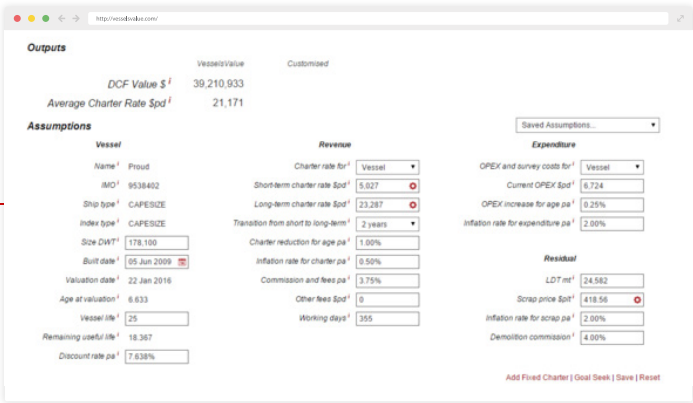
RECOVERY RATES
This tool provides a compilation of 'forced' sales, such as judicial auctions or bank initiated sales, which have been reported in the industry media since 2007 for the 3 main segments (Bulk, Container and Tanker).

MATRIX
Matrix of market values for generic (standard specification) vessels by type and year of build.

STATS
Summary statistics showing ownership by vessel type/company, sales stats by year/number/\$, fleet stats.



Example vessel valuation page.



Example DCF valuation page.

Back % Change Export Matrix Data Historical Matrix Today		VV Matrix Wed 1st Jan 2014											
		All	Bulkers	Containers	Tankers	LNG	LPG						
Year of Build		2017	2016	2015	2014	2013	2012	2011	2010	2009	2008	2007	
Bulkers DWT	Cape	61.92 180k	61.31 180k	60.70 180k									
	Pmax	31.69 80k	32.34 80k	33.00 80k									
	Supra	30.86 60k	31.81 60k	32.80 60k									
	Handy	25.16 30k	24.91 30k	24.66 30k									
Containers TEU	ULCV	155.28 18k	152.24 18k	149.25 18k									
	New	112.15 12k	109.95 12k	107.79 12k									
	Pmax	63.68 7k	62.43 7k	61.21 7k									
	Pmax	40.48 4k	39.68 4k	38.91 4k									
	Sub	25.32 3k	24.82 3k	24.34 3k									
	Handy	19.76 1k	19.37 1k	18.99 1k									
	Pmax	14.74 750.0	14.45 750.0	14.17 750.0									

Example matrix page.



Search

Search our database of vessels (live and on order), newbuilding contracts, demolition sales, period charters, trading sales and failed sales. Filter and sort by all relevant technical and commercial features and specifications (i.e. type, size, engine, age, tank coating, lifting gear, containment systems, reefer plugs, owner, buyer, seller and much more).

Our powerful online database allows you to search and analyse:

- The Global Fleet (i.e. live and newbuild vessels, yards and companies).
- The current and historical deals (i.e. trading sales, failed sales, newbuilding contracts, demolition sales and period charters).

SEARCH

Explore the database by a huge range of specifications and attributes with no restrictions on the number of daily searches.

COMPARE

Select multiple vessels and transactions from search results to compare specifications and values on one screen.

MONITOR

Save your search and access later, saving time and giving instant access to the data that matters.

Save your target lists in portfolios allowing you to monitor your chosen vessels in the same way as for company fleets. Go one step further to set up alerts to be sent to your inbox.

COMBINE

Combine with our Map tool to plot your search results in one click.



Example screenshot of the VesselValue.com search interface. The interface shows a search bar, filters, and a table of search results.

Filters applied:

- Ship Type: VLCC
- Builder Country: Japan
- Build Year: between 2000 and 2005
- Laden / Ballast: Laden

Search Results (42 vessels):

Vessel Name	Type	Size	Built	Builder	Company
Altair Trader	VLCC	311,100 DWT	2005	Mitsui Ichihara	MOL
Aquarius Wing	VLCC	302,200 DWT	2005	IHI	NS United Kalun Kaish
Artis	VLCC	298,300 DWT	2001	Hitachi	Euronav
Asian Progress 3	VLCC	306,400 DWT	2004	Mitsubishi HI	MOL
Australis	VLCC	299,100 DWT	2003	Universal	Chandris
C Dream	VLCC	298,600 DWT	2000	Hitachi	Navios Midstream Part
Chrysol	VLCC	298,900 DWT	2000	Kawasaki	Aeolos Management
Felcity	VLCC	280,000 DWT	2000	IHI	Impire Shipping
Formosapetra Challenger	VLCC	281,500 DWT	2001	IHI	Formosa Plastics
Front Commodore	VLCC	298,600 DWT	2000	Hitachi	Dr Peters

Example fleet search.



Map

Our advanced AIS satellite and terrestrial vessel mapping and tracking service. Analyse current and historical vessel, company fleet and portfolio movements in real time.

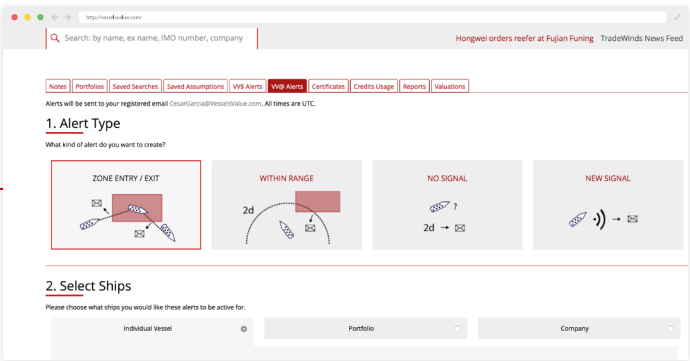
Filter, sort and group the global fleet and display AIS derived information (i.e. laden/ballast, navigation status, speed). Automated Zone Alerts (i.e. sanction zone entry/exit, lost signal) and Port Distance Calculator also available.

ZONE ALERTS

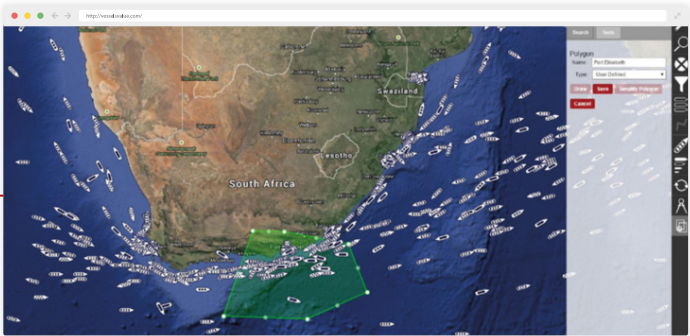
Set up your own Zone Alerts against individual ships, companies or portfolios to see when a vessel enters or exits a zone, goes within range or loses signal. Draw your own zone or select from predefined areas (i.e. US sanctions). Alerts are sent directly to your email.

PORT DISTANCE TRACKER

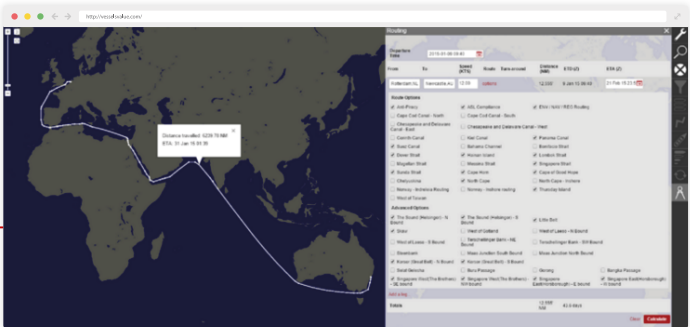
Choose from over 2,500 ports and track the amount of time, nautical miles or speed from one location to another. Includes multiple legs, route options and turnaround time.



Setup your own zone alerts.



Example Zone alert around Port Elizabeth.



Example distance tracking (Rotterdam to Newcastle).



Trade

Want to know everything about global trading patterns and see which vessels are available to pick up cargo at any location? Trade turns data into information so you can make informed commercial and operational decisions.

Including a vessel specific trade tool and macro ton mile demand summary; you can identify supply and demand patterns, improve operational efficiency for Bulker, Tankers and Gas.

Unlike traditional methods, we don't rely on inaccurate or untimely customs data. Instead we use our data and algorithms to calculate all analytics including ton mile demand at the vessel level.

STARTING AT VESSEL LEVEL

With our vessel specific trade tool you can access journey and stoppages information, including a vessel's current journey. Our stoppages heatmap will also give you a quick snapshot of its most visited ports and anchorages.

Laden and ballast speeds allow you to see how a vessel is being run and you can also access drydock, layout and bunkering history.

PORTS

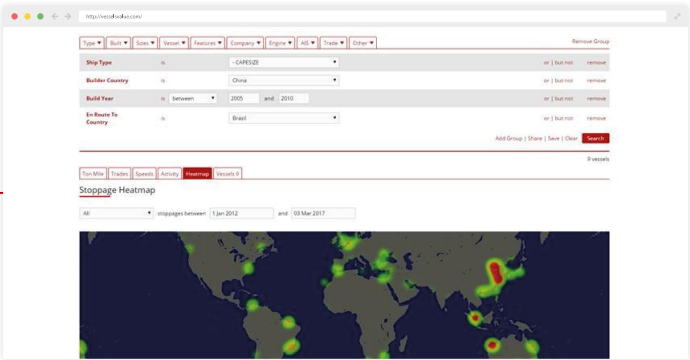
See all journeys in and out of every port to analyse vessel trading history, or learn about new sectors and trade routes. You can also access information on vessels in ports, including current and historical data.

FIND AND ANALYSE THE DATA

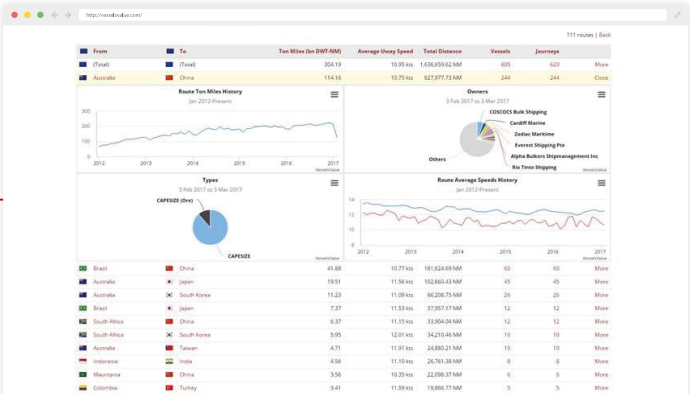
Search and analyse our database by a huge range of vessel specifications and features in order to view ton mile demand, trades, speeds and activity by different groupings (global, sector, type, fleet).

TON MILE DEMAND SUMMARY

For a macro view of vessel ton mile demand use our Ton Mile Demand Summary. You can analyse YOY and MOM changes by actual figures and percentages, broken down by vessel type. Graphs and charts illustrate import and export ports as well as supply and demand patterns.



Search for trades by hundreds of criteria. Displayed on an easy to read Heatmap.



Analyse trade routes by company, ton mile history, speeds and more.

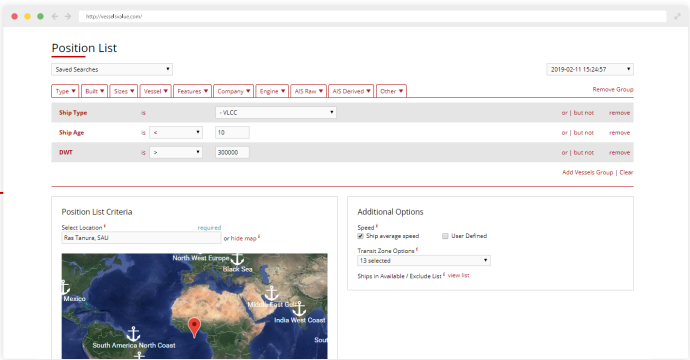
POSITION LIST

Get up to date information on which vessels are available to pick up cargo at any location in the world at the click of a button.

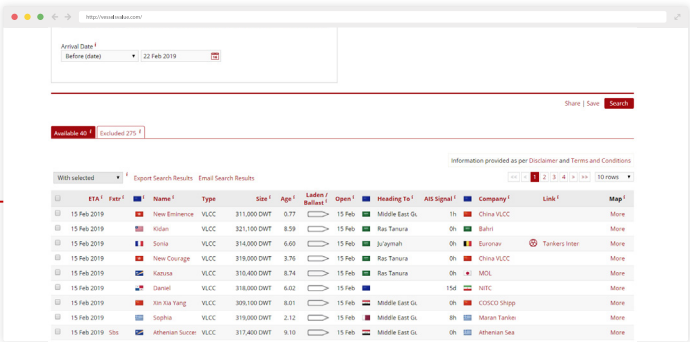
With our easy to use platform you can choose your own criteria including ship specifications, locations (ports, regions, any location on a map), arrival dates, speeds and use of transit zones.

THE DATA WE USE

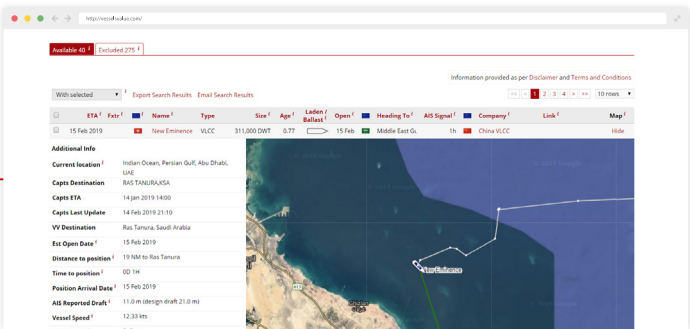
All our data is extensively researched, cleaned and updated by our dedicated research department. We are not reliant on Captain's reports. Instead we use our proprietary vessel destination logic.



Choose your own criteria including ship type, location, arrival date, speed and transit zone



Search by available or excluded vessels.



Investigate individual ship's movement history



vesselsvalue.com



For more information contact

+44 (0) 203 026 5555
info@vesselsvalue.com

VesselsValue Ltd
Lyric House
149 Hammersmith Road
London W14 0QL
United Kingdom

VesselsValue Ltd is registered in England